

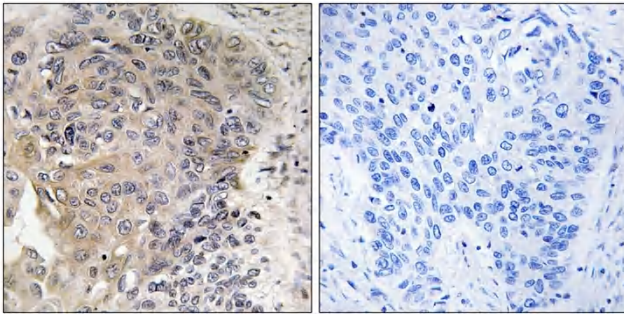


CCP3 Polyclonal Antibody

Catalog No	YP-Ab-16147
Isotype	IgG
Reactivity	Human;Rat;Mouse;
Applications	IHC;IF;ELISA
Gene Name	AGBL3
Protein Name	Cytosolic carboxypeptidase 3
Immunogen	The antiserum was produced against synthesized peptide derived from human AGLB3. AA range:611-660
Specificity	CCP3 Polyclonal Antibody detects endogenous levels of CCP3 protein.
Formulation	Liquid in PBS containing 50% glycerol, 0.5% BSA and 0.02% sodium azide.
Source	Polyclonal, Rabbit,IgG
Purification	The antibody was affinity-purified from rabbit antiserum by affinity-chromatography using epitope-specific immunogen.
Dilution	IHC: 1/100 - 1/300. ELISA: 1/20000.. IF 1:50-200
Concentration	1 mg/ml
Purity	≥90%
Storage Stability	-20°C/1 year
Synonyms	AGBL3; CCP3; Cytosolic carboxypeptidase 3; ATP/GTP-binding protein-like 3
Observed Band	
Cell Pathway	Cytoplasm, cytosol .
Tissue Specificity	Testis,
Function	cofactor: Binds 1 zinc ion per subunit.,function: May play a role in the processing of tubulin.,similarity: Belongs to the peptidase M14 family.,
Background	cofactor: Binds 1 zinc ion per subunit.,function: May play a role in the processing of tubulin.,similarity: Belongs to the peptidase M14 family.,
matters needing attention	Avoid repeated freezing and thawing!
Usage suggestions	This product can be used in immunological reaction related experiments. For more information, please consult technical personnel.



Products Images



Immunohistochemistry analysis of paraffin-embedded human lung carcinoma, using CBCP3 Antibody. The picture on the right is blocked with the synthesized peptide.